

SYCARA V







Sycara V's huge, 68 metre, ultramarine blue hull, wraps around a curved Deco-styled superstructure. With the finest deck space of any comparable yacht, a sensational sundeck flows from a shaded dining area aft through the air-conditioned gymnasium to a sunbathing terrace forward with an 8 person Jacuzzi.

This yacht has enormous presence.

7 staterooms / 12 guests



SYCARA V

SYCARA V

Sycara V was built at Nobiskrug in Germany to an exacting specification with the ultimate goal of creating the finest yacht of her class. Ambitious perhaps, but nothing is achieved without the determination to build the exceptional.

Each deck is dedicated to one purpose, uncompromised by size, scope or style. A sundeck for outdoor pleasures, a superb main deck for entertaining and a "beach club" on the stern to rival any on land. With a top speed of 17 knots, Sycara V cruises at 14.5 knots with a range of 9,800 nautical miles at 10 knots. Large freezers and copious storage allow for long distance cruising if desired. Over-engineered, she has three generators but needs only the power of one to operate. More than enough of everything means extraordinary comfort everywhere. Stillness and silence are absolutes on Sycara V. Zero speed stabilizers and her solid steel hull create a cocoon of comfort that is unsurpassed.

Sycara V is ready to cross the oceans, to astonish, to push the limits of perfection and to prove her ambition: never settle for less than the best. In recognition of the attainment of this goal, Sycara V was awarded one of the yachting industry's most prestigious honors, Boat International Media's 2011 World Superyacht Award as the Best Displacement Motor Yacht of her class.







SYCARAV





BEACH CLUB

The beach club consists of a 30 square metre full-beam swim platform together with an interior lounge furnished with a Murano clear glass bar and a bathroom with shower (a fresh water shower is also located on the swim platform). Twin side garages launch 31 ft and 23 ft tenders. Sycara V's beach club ambiance can easily be re-created ashore where the crew will set up a gazebo, tables and chairs for a breezy, casual lunch or a romantic dinner by the sea.





SUN DECK

Sycara V's sundeck is more like a very private resort and comprises three areas.

The aft deck features a dining table for up to twelve guests, a barbecue and a horseshoe-shaped bar shaded by removable scallop shaped awnings.

The health spa / gymnasium is located in the center with full-height sliding glass doors.

Forward, flanked by large sunbed / sofas, observation seating and individual sun lounge chairs, a Jacuzzi terrace can be shaded with awnings.





AFT SUNDECK







TRUE

LifeCORE



HEALTH SPA

The air-conditioned health spa and gymnasium with private massage room and bathroom with steam / shower allows guests to be pampered while they undergo their exercise regimen. Top of the line treadmills, rowing and cycling machines and free weights provide the exercise challenge; three overhead television screens provide entertainment.

Perhaps one of Sycara V's greatest features is a near full-beam deck lounge forward of the Portuguese bridge.

A triple sunbed and deep sofas create a soft surfaced terrace for guests to bask in the brilliant sunshine or optional awnings offer cooling shade.

Drinks, snacks, music and the sound of the sea, here is yet another area where Sycara V offers guests complete privacy.









1.9 METRES
MAIN SALOON
WINDOW HEIGHT

Sycara V's main deck is an almost unbelievable expanse of space. The concept is simple yet sophisticated: an open living space flowing from the main aft deck to the striking white onyx lobby and the lounge/library forward.

Quality (as well as quantity) of light is an inspiring feature of the entire yacht. The saloon is side lit by full-height, full-width windows with infinity views across decks uninterrupted by bulwarks. Signature Spinneybeck pale leather sofas, metallic teal blue lacquered cabinets and burl maple panelling have been used in a subtle, classic / contemporary design. All of the entertainment speakers are concealed in hexagonal walnut columns. The saloon easily transforms into a luxury cinema: layers of electronically controlled curtains close, the St. Barth's painting retracts, lights dim, popcorn is served. Choose from hundreds of features available via the Kaleidescape system with iPad remote controls throughout. For live music, a Yamaha piano is neatly housed in one of the side cabinets.

A semi-circular sea blue Murano glass bar faces aft with a fully rotating 40 inch plasma screen which drops down from the ceiling.

The dining saloon aft seats twelve guests and provides panoramic views through full-height sliding glass curved doors. The aft deck has two movable dining tables that can seat up to twenty-four guests with Spinneybeck blue leather chairs and the use of the large U-shaped built-in settee.

The sliding glass doors to the aft deck can be opened to create a spacious indoor / outdoor entertaining area.





THE EXPANSIVE MAIN SALOON, LOOKING FORWARD TO THE LOUNGE/LIBRARY.



THE SALOON TRANSFORMS INTO A CINEMA WITH A 63 INCH SCREEN







THIS PAGE: THE ENTRANCE LOBBY HAS AN ELEVATOR TO ALL FOUR GUEST DECKS

OPPOSITE PAGE: LOUNGE/LIBRARY











AFT MAIN DECK





MASTER SUITE

Sycara V's master suite occupies the entire aft section of the upper deck. A deluxe penthouse retreat, the bedroom is filled with light through full-height sliding glass curved doors aft. A 40 inch plasma screen is concealed at the end of the king-size bed. Burl walnut, metallic lacquered cabinets and leather panelling are the principal decorative surfaces.

The full-beam aft deck is totally private. Walk-around decks are accessed through port and starboard glass wind doors. The twin floating tread staircases can be locked for complete privacy. The high/low glass table showcases the circular skylight above the main aft deck. For very special occasions, up to twelve guests can dine on the master suite aft deck.













His/hers onyx panelled bathrooms share a central steam / shower and Jacuzzi tub.





Facing full-height windows and infinite views, the master study is an inspiring environment, totally equipped with wifi / broadband internet access.

A single en suite stateroom with Pullman berth for security or children (opposite) is located across from the master suite.



GUEST SUITES

Five beautifully-appointed en suite staterooms below offer a versatile choice of sleeping options. The staterooms include two kings, two kings each with a single + a Pullman berth, plus a single stateroom with a Pullman berth.

All staterooms have wifi / broadband connections as well as 31 inch LCD screens with music, television and movies via the Kaleidescape entertainment system.

Each stateroom has colour-coordinated cabinets of metallic lacquers matched by spectacular floor-to-ceiling gold, emerald, sapphire or topaz onyx bathrooms. Chestnut burl, walnut and birch panelling, Deco-styled lighting and softly textured wool carpets create an atmosphere that is the epitome of chic sophistication.







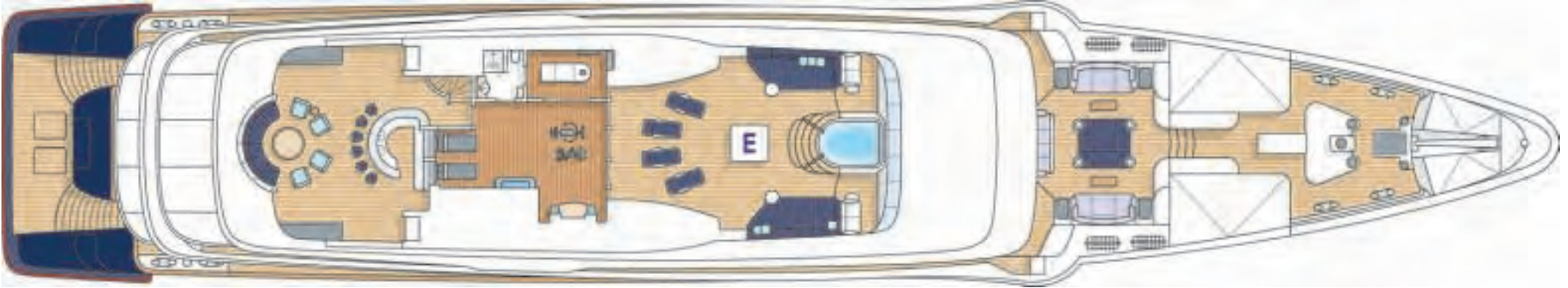




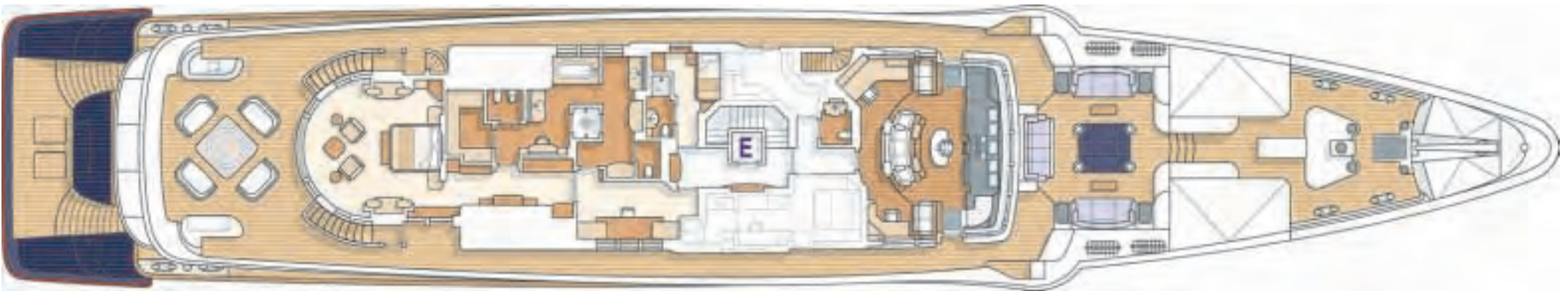


The fully-integrated bridge is furnished to guest standards. Port and starboard wing stations give the captain unobstructed views while manoeuvring in port.





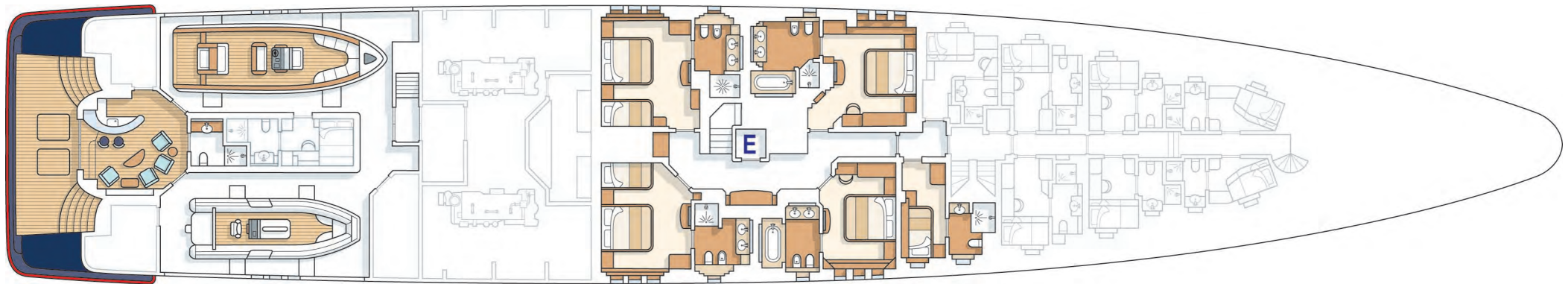
SUN DECK



UPPER DECK



— MAIN DECK —



— LOWER DECK —

ACCOMMODATION:

12 guests in 7 en suite staterooms

Crew: 16

MAIN CHARACTERISTICS

Length:	68 m / 223 ft
Beam:	12.5 m / 41 ft
Draft:	3.7 m / 12 ft
Builder:	Nobiskrug
Year Built:	2010
Designer:	Nobiskrug / Craig Beale, Pure Detail
Interior Designer:	Craig Beale, Pure Detail
Hull:	Steel (Displacement)
Flag:	Cayman Islands
Classification:	Lloyd's
Compliant to:	MCA LY2. ISM/ISPS
Gross registered tonnage:	1,566
Hydraulic stern passerelle (port)	
Hydraulic accommodation ladder (starboard))	

CAPACITIES

Fuel:	49,923 gallons / 188,980 litres
Fuel consumption:	100 gph / 378 lph @ 14.5 knots
Fresh water:	7,925 gallons / 30,000 litres
Watermakers:	2 @ 10,566 gpd / 40,000 lpd

TECHNICAL

SPEED AND RANGE

Maximum speed:	17 knots
Cruising speed:	14.5 knots
Range:	9,800nm @ 10 knots

MECHANICAL EQUIPMENT

Engines:	2 x Caterpillar 3516B / 2,130 hp each
Generators:	3 x Caterpillar C9 / 250 kW each
Outlets:	110/220-50/60 hertz (European and American power)
Stabilizers:	Quantum Zero Speed

ENTERTAINMENT EQUIPMENT

Satellite TV, iPod docks and MP3 connections throughout, home theatre with surround sound in the lounge/library, Kaleidescape central movie / music server with iPad remote controls throughout, Wii exercise / game console in lounge/library

TENDERS AND RECREATION

Tenders:	9.44 m / 31 ft Novurania Chase 7 m / 23 ft Novurania Launch (jet drive)
----------	--

Recreation:	2 x 3 person wave-runners, snorkel gear, towable tubes, floating island, wakeboard, water skis, slalom ski, 2 x kayaks, fishing tackle, full beach set-up and accessories
-------------	---

Health spa / gymnasium:	2 x treadmills, stationary bike, rowing machine, free weights
Jacuzzi (8 person):	sunbed/sofas, sun lounge chairs





PARADISE

YACHT CHARTERS

[HOME](#) [DESTINATIONS](#) [YACHT SEARCH](#) [CHARTER TERMS](#) [YACHT PURCHASE](#) [NEWSLETTERS](#) [BLOG](#) [CONTACT](#)



CHARTER YOUR YACHT TODAY!

www.ParadiseYachtCharters.com
rjr@anythingonthewater.com
(954) 462-0091