

# TURQUOISE

Charter Yacht Brochure







Main Saloon







Main Saloon





Dining



## Master Suite





## Master Cabin





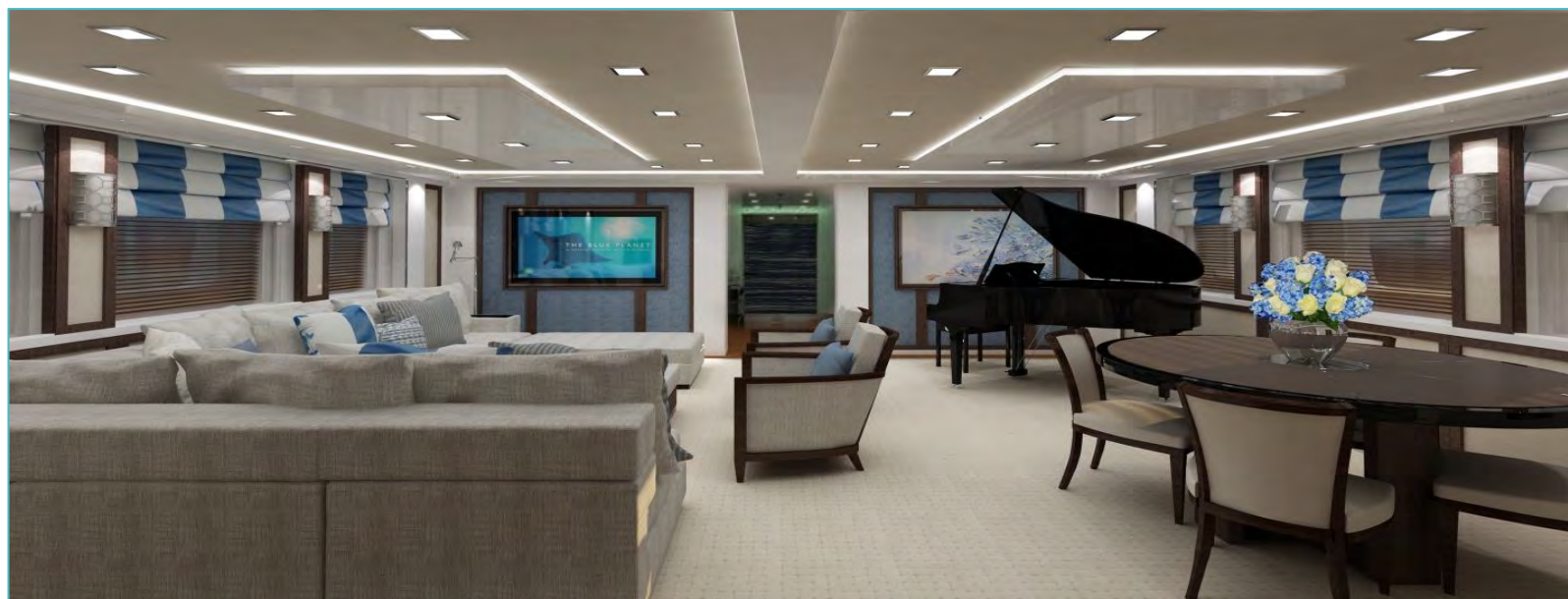
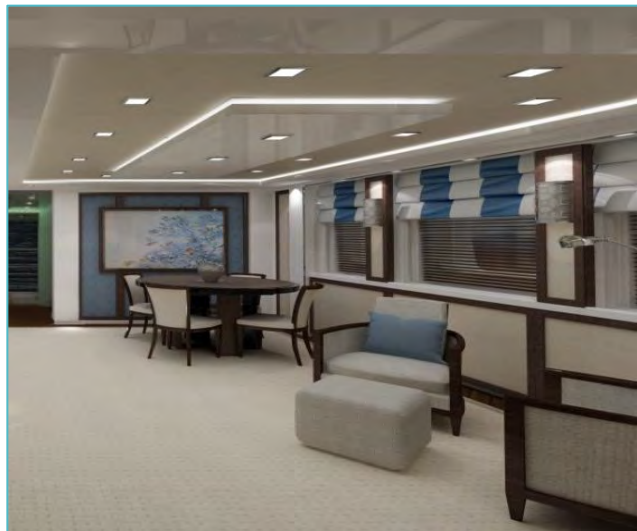


VIP Guest Cabin





Sky Lounge







---

Main Deck Aft





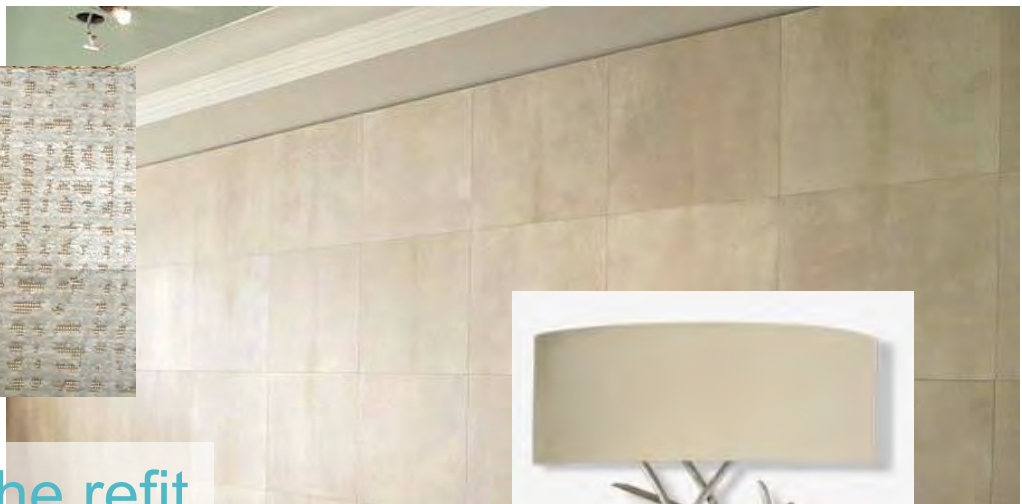
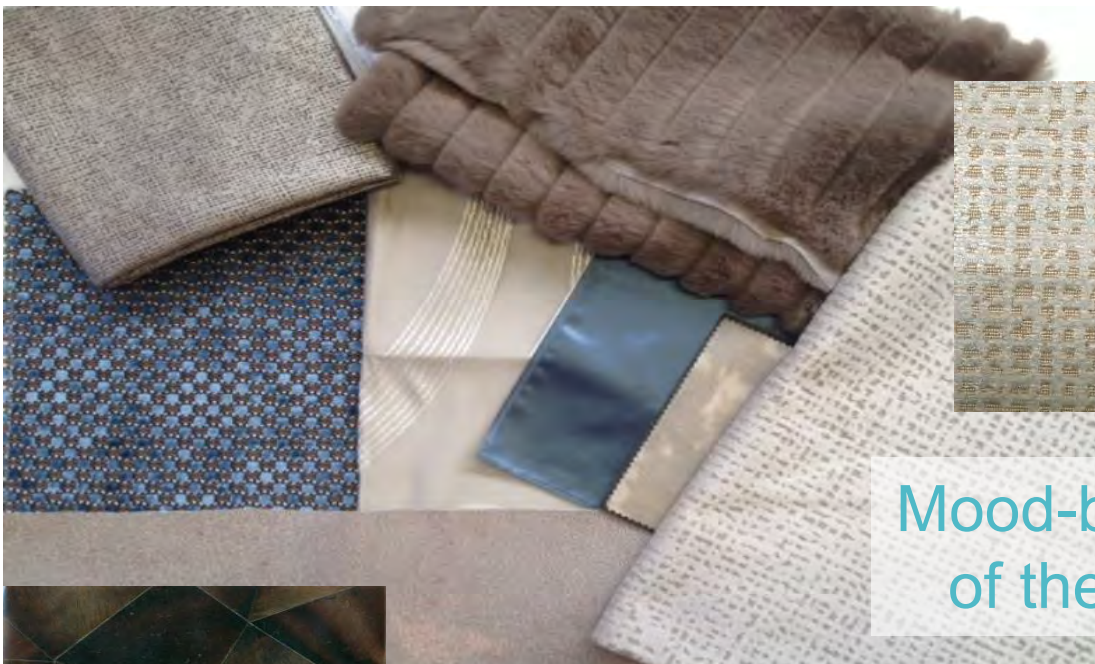




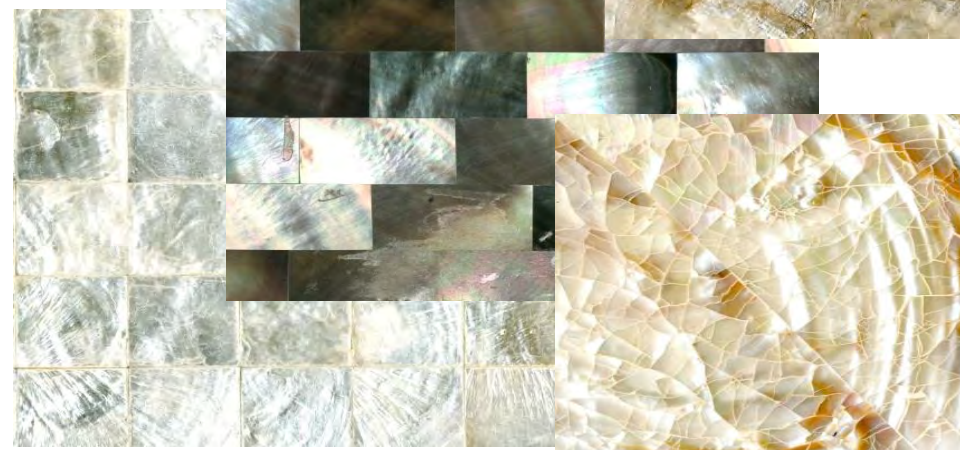
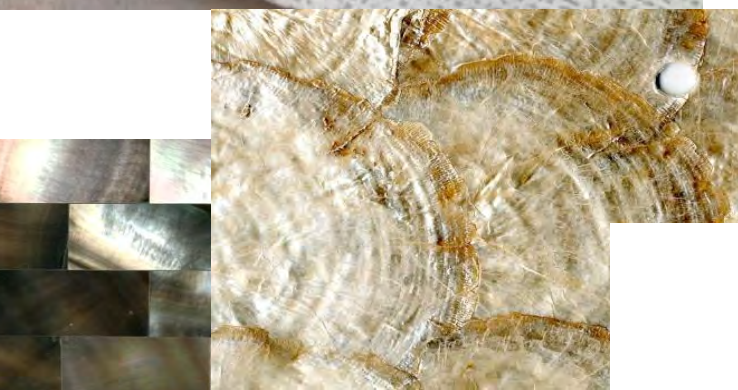
# Chef Graham Dutton won 3rd place in the 50m+ chef's Competition at the Genoa Show 2014





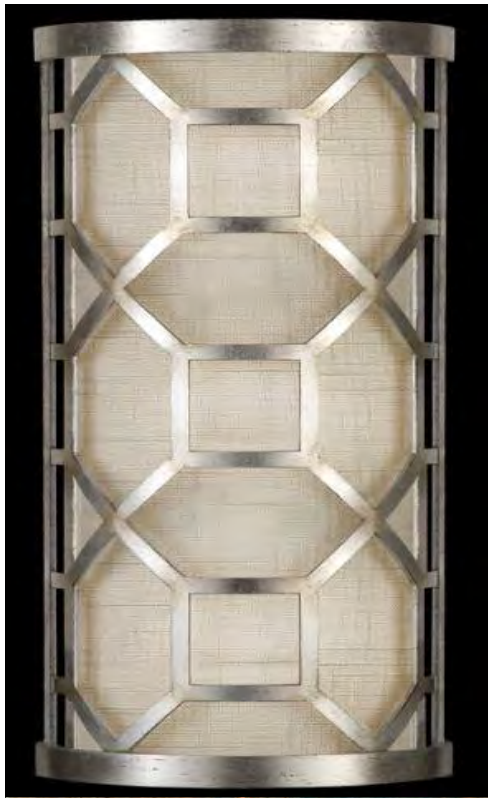


Mood-board for the refit  
of the Guest Cabins

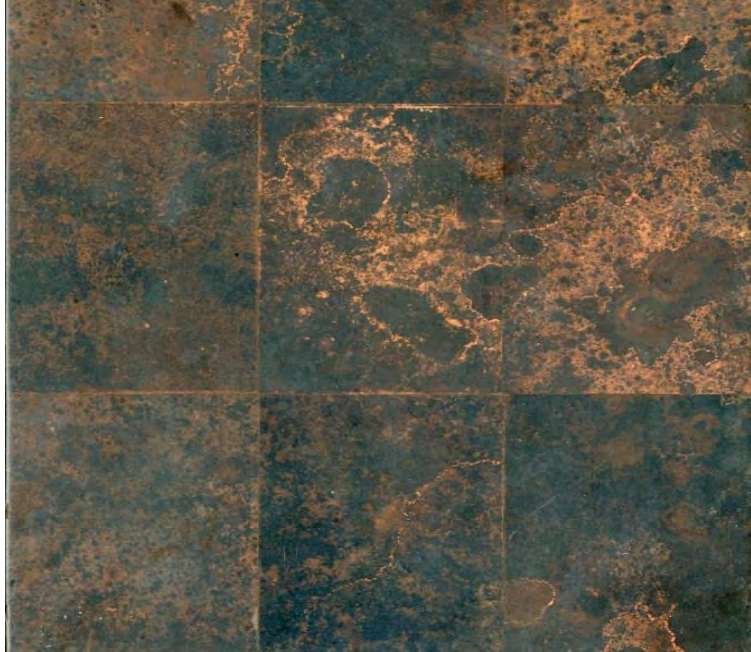


All items shown above are for illustration purposes only and may be subject to change.





Mood-board for the refit  
of the Guest Areas



All items shown above are for illustration purposes only and may be subject to change.



**Inspiration:** The refit mandate was to provide a yacht with a plush and contemporary interior; obtaining a more residential comfort with a dusting of understated glamour. Colour palette throughout the main reception areas is silver, cream, white and turquoise using a diffusion of textures across a range of luxury fabrics to provide a soothing, relaxing environment. The use of ebony Macassar wood has also been introduced throughout the guest areas.

**Main Saloon,** an area where guests can relax on an Italian inspired sofa upholstered in a velvet embossed fabric by Zimmer and Rhode. Donghia armchairs in dark stained maple, upholstered in snakeskin white leather. Coffee table in shagreen blue and silver sting ray texture with a gloss lacquer. Buttoned Ottoman in gloss leather which is also used on the wall panel. Ralph Lauren floor lamps. Gloss leather on bulk heads.

**Dining room** boasts custom made dining chairs in sting ray silver leather upholstery, and a crystal and stainless steel chandelier. Curtains are Chase Irwin silk with a custom made embroidered tape (see image attached) down the leading edge. Held back with Swarovski Crystal tie backs. A variety of Calvin Klein scatter cushions. Silk roman blinds with a contrast cream band. The carpet is hand tufted wool woven in a customised pattern.

**Sky Lounge** includes a grand piano, square shaped sofa and multi purpose ottoman to make this a great place for informal gatherings. All new furniture with shark leather and blue chenille upholstery also used on some of the wall panels. The furniture is darker to match with the existing oak floor. Rug is hand tufted with a contrast border. Ralph Lauren reading lights and silver leaf wall sconces. A light and airy lounge leading directly onto the main deck.

**Stairs** with white snakeskin and deep chocolate crocodile leathers now feature to give an organic feel. All doors have been refinished to closely reflect the look of each room. Deck heads have been softened with faux leather fabric to soften the interior.

The **Sun Deck** has been reconfigured to now include a bar and barbecue area and furnishing are upholstered in cool grey, cream and blue fabrics.

The **Main Deck** now incorporates a Cinema and has a Nikki Beach feeling with modular Paola Lenti furniture that can be manoeuvred into a gigantic seating area and sheer curtains to provide privacy.

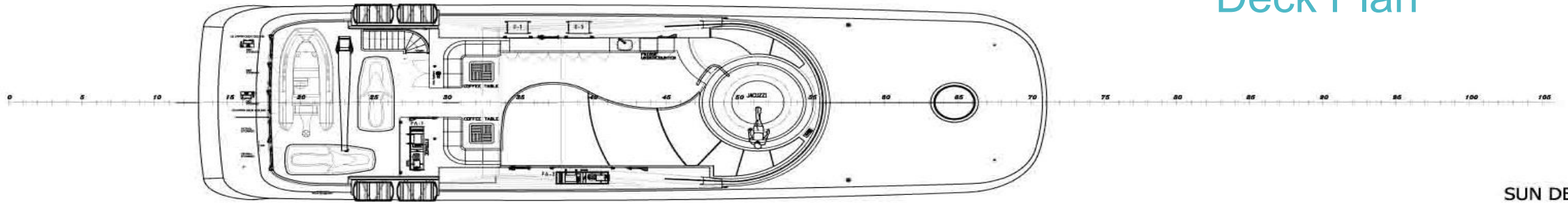
The specialist paint effect artist Michael Maynard will paint over existing Guest cabin wardrobe doors and some cupboards in with a parchment effect and also some tortoise shell effect in the sky lounge.



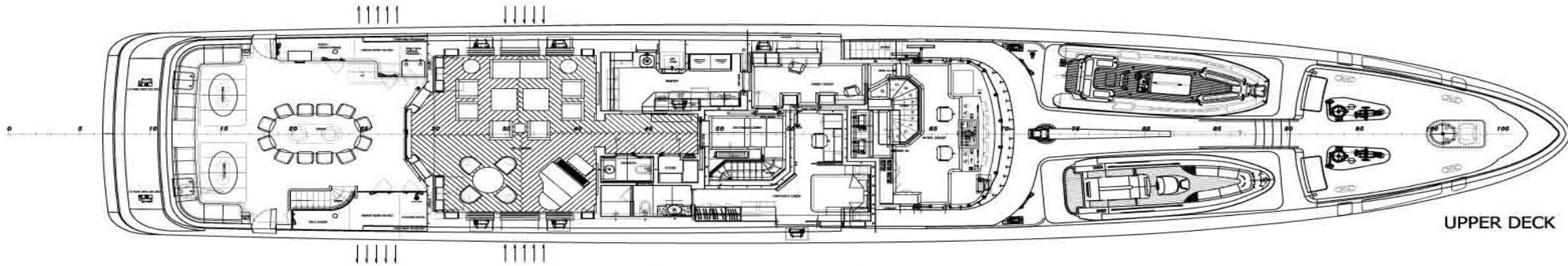




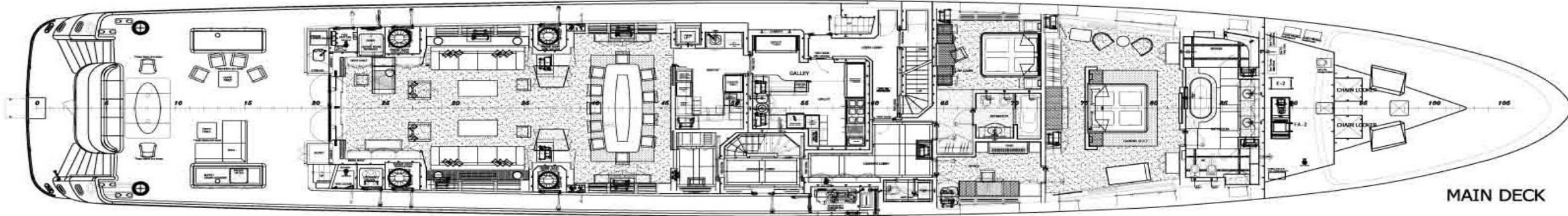
# Deck Plan



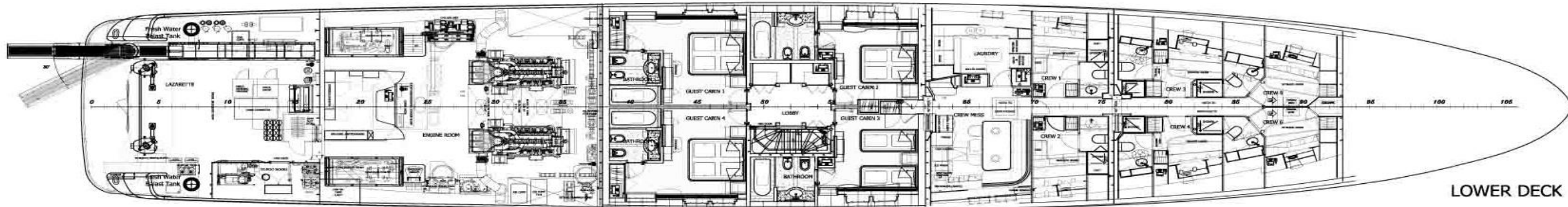
SUN DECK



UPPER DECK



MAIN DECK



LOWER DECK



# TURQUOISE

## Charter Yacht Specifications

---

### Length

55.4m (181.7ft)

### Build

2011 (refitted 2014) Proteksan Turquoise

### Interior Designer

H2 Design

### Cruising Speed / Fuel Consumption

12 knots / 215 litres per hour

### Crew

Captain Ben Craig-Cameron plus 12

### Guests and Accommodation

Master suite on main deck with separate study, full width cabin and en-suite bathroom.

VIP cabin also located on main deck.

Two double cabins, a double cabin that can convert into a twin and a twin cabin all on the lower deck with en-suite bathrooms.

All details in this document are given in good faith but can not be guaranteed.

### Water Sports & Recreation

1X Dariel 7.5m custom dress tender

1X Novurania 7.5m custom beach tender

1X Narwhal 4.8m SOLAS tender

Waterskis & wake boards & various inflatable toys

Sea kayaks, paddle boards

Fishing gear & snorkelling gear

2 x 2-person high-speed waverunners

Boomschwim with trampoline and waterslide.

Concept2 Rower, Cross trainer, Exercise bike, Free weights, Yoga and Pilates accessories.

### Communications & Entertainment

Kaleidescape Movie Server System, Multi-room Audio System with Access to Music Library & Guests own music via airplay

External Audio & TV to the Sun Deck,

LED HD TVs throughout, including 75" in the Sky Lounge, Aft Deck Cinema with 92" Screen

### Special Features

Refit completed 2014

Reconfigured sundeck with bar, lounging and dining areas.

RYA Training centre.

